

MG TF (TD) - Floorboard Fasteners

(rev 3/9/2015)

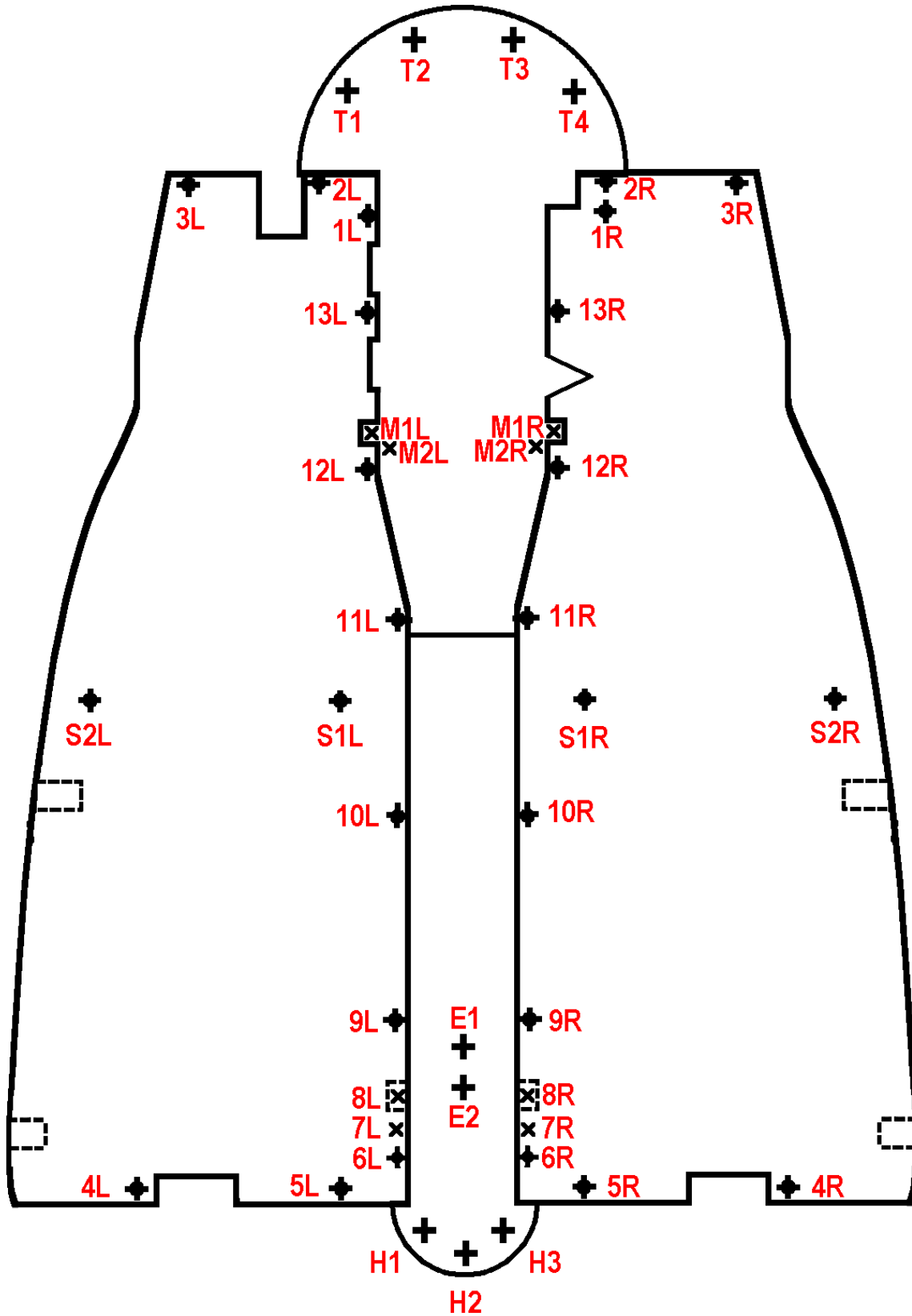


Diagram created from Roy Challberg's floorboard plans with permission of author and web host.

<http://www.ttalk.info/MGTDFloorboards5.htm>

Fasteners and locations in TF7211

Lonnie Cook - Orlando, FL

MG TF (TD) - Floorboard Fasteners

NUM	HEAD	DIAM	THREAD	LGTH	WASHER	NOTES <small>(rev 3/9/2015)</small>
1L	Flat Phil	1/4	BSF	5/8	7/8" O.D. FB Wash	Rectangular T-Nut. Gearbox cover on top of floorboard.
2L	Flat Phil	1/4	BSF	1	7/8" O.D. FB Wash	
3L	Flat Phil	1/4	BSF	1	7/8" O.D. FB Wash	
4L	Flat Phil	1/4	BSF	1	7/8" O.D. FB Wash	
5L	Flat Phil	1/4	BSF	1	7/8" O.D. FB Wash	
6L	Flat Phil	1/4	BSF	1	7/8" O.D. FB Wash	Prop shaft cover below floorboard.
7L	Flat Phil	1/4	BSF	3/8	none	Below floorboard. Into chamfered hole near rear of floorboard support. Through middle hole of cross-member support.
8L	3/16W Hex	1/4	BSF	3/4	7/8" O.D. FB Wash	
9L	Flat Phil	1/4	BSF	1	7/8" O.D. FB Wash	Prop shaft cover below floorboard.
10L	Flat Phil	1/4	BSF	1	7/8" O.D. FB Wash	Prop shaft cover below floorboard.
11L	Flat Phil	1/4	BSF	1	7/8" O.D. FB Wash	Gearbox cover on top of floorboard. Prop shaft cover below floorboard.
12L	Flat Phil	1/4	BSF	1	7/8" O.D. FB Wash	Gearbox cover on top of floorboard.
13L	Flat Phil	1/4	BSF	5/8	7/8" O.D. FB Wash	Rectangular T-Nut. Gearbox cover on top of floorboard.
1R	Flat Phil	1/4	BSF	5/8	7/8" O.D. FB Wash	Round T-Nut. Gearbox cover on top of floorboard.
2R	Flat Phil	1/4	BSF	1	7/8" O.D. FB Wash	
3R	Flat Phil	1/4	BSF	1	7/8" O.D. FB Wash	
4R	Flat Phil	1/4	BSF	1	7/8" O.D. FB Wash	
5R	Flat Phil	1/4	BSF	1	7/8" O.D. FB Wash	
6R	Flat Phil	1/4	BSF	1	7/8" O.D. FB Wash	Prop shaft cover below floorboard.
7R	Flat Phil	1/4	BSF	3/8	none	Below floorboard. Into chamfered hole near rear of floorboard support. Through middle hole of cross-member support.
8R	3/16W Hex	1/4	BSF	3/4	7/8" O.D. FB Wash	
9R	Flat Phil	1/4	BSF	1	7/8" O.D. FB Wash	Prop shaft cover below floorboard.
10R	Flat Phil	1/4	BSF	1	7/8" O.D. FB Wash	Prop shaft cover below floorboard.
11R	Flat Phil	1/4	BSF	1	7/8" O.D. FB Wash	Gearbox cover on top of floorboard. Prop shaft cover below floorboard.
12R	Flat Phil	1/4	BSF	1	7/8" O.D. FB Wash	Gearbox cover on top of floorboard.
13R	Flat Phil	1/4	BSF	5/8	7/8" O.D. FB Wash	Rectangular T-Nut. Gearbox cover on top of floorboard.
T1	Flat Phil	1/4	BSF	5/8	7/8" O.D. FB Wash	
T2	Flat Phil	1/4	BSF	5/8	7/8" O.D. FB Wash	
T3	Flat Phil	1/4	BSF	5/8	7/8" O.D. FB Wash	
T4	Flat Phil	1/4	BSF	5/8	7/8" O.D. FB Wash	
H1	Flat Phil	1/4	BSF	5/8	7/8" O.D. FB Wash	
H2	Flat Phil	1/4	BSF	5/8	7/8" O.D. FB Wash	
H3	Flat Phil	1/4	BSF	5/8	7/8" O.D. FB Wash	
S1L	1/4W Hex	5/16	BSF	3/4	Flat	Round T-Nut
S2L	1/4W Hex	5/16	BSF	3/4	Flat	Round T-Nut
S1R	1/4W Hex	5/16	BSF	3/4	Flat	Round T-Nut
S2R	1/4W Hex	5/16	BSF	3/4	Flat	Round T-Nut
M1L	3/16W Hex	1/4	BSF	5/8	Flat	Secures front of floorboard support to Rear Mount Support Bracket.
M2L	5/16W Hex	3/8	BSF	3/4	Square LW	Secures Rear Mount Support Bracket to cross-member.
M1R	3/16W Hex	1/4	BSF	5/8	Flat	Secures front of floorboard support to Rear Mount Support Bracket.
M2R	5/16W Hex	3/8	BSF	3/4	Square LW	Secures Rear Mount Support Bracket to cross-member.
E1	3/16W Hex	1/4	BSF	3/4	Flat ?	Pointed tip
E2	3/16W Hex	1/4	BSF	3/4	Flat ?	Pointed tip
	Flat Slotted	#10				Brass. Four on outside edge of each floorboard into wood bottom main rail.

MG TF (TD) - Floorboard Fasteners

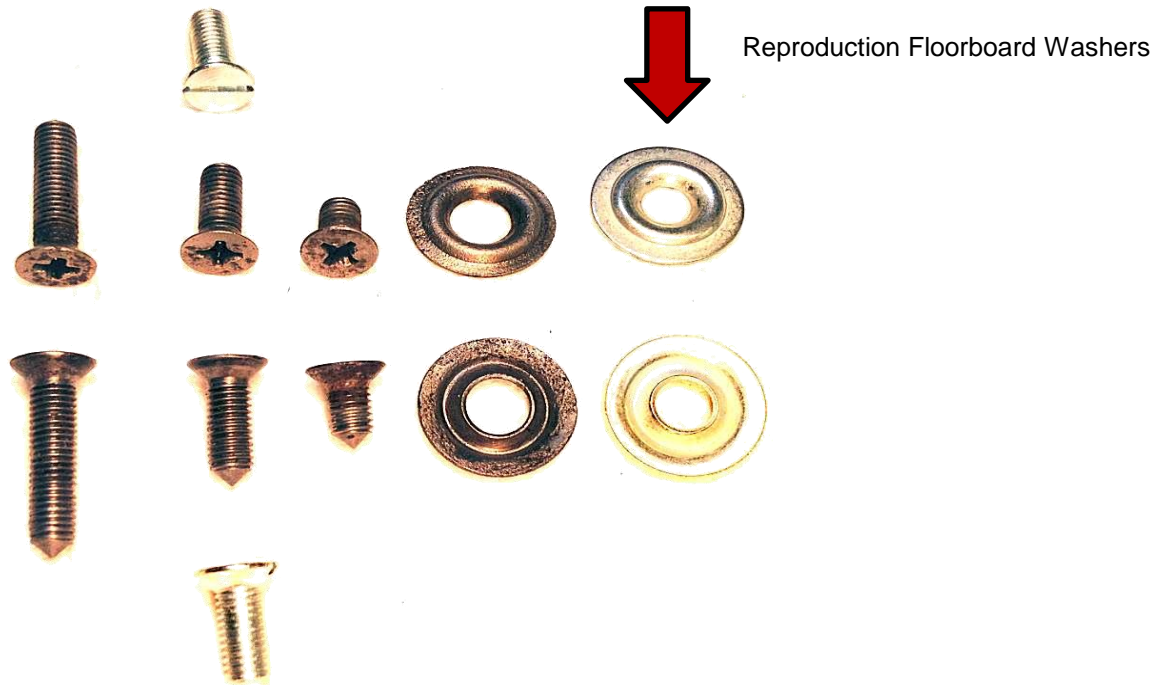
(rev 3/9/2015)

TOTAL	HEAD	DIAM	LGTH	FTFU	MOSS	AB SPAR	BRIT T&F
4	1/4W Hex	5/16	3/4	BSB5H07	360-360	23 185	1655
4	3/16W Hex	1/4	3/4	BSB4H08	320-750	23 110	1015
2	3/16W Hex	1/4	5/8	BSB4H08	320-180	23 105	1010
2	5/16W Hex	3/8	3/4	BSB6H08	320-560	23 250	1705
18	Flat Phil	1/4	1	MFW408		41 075	1875
2	Flat Phil	1/4	3/8	MFBS404		41 076	1865
11	Flat Phil	1/4	5/8	MFBS405		41 076	1875
"Kit"				FSBT317	323-828	41 073a	

Bolts and screw Part Numbers are for the closest size available.

Call supplier to learn contents of Floorboard Fastener "Kit"

All machine screws are flat head, Phillips drive (#3 Phillips screwdriver), with pointed tips.
 Reproduction machine screws are slotted and have flat tips.



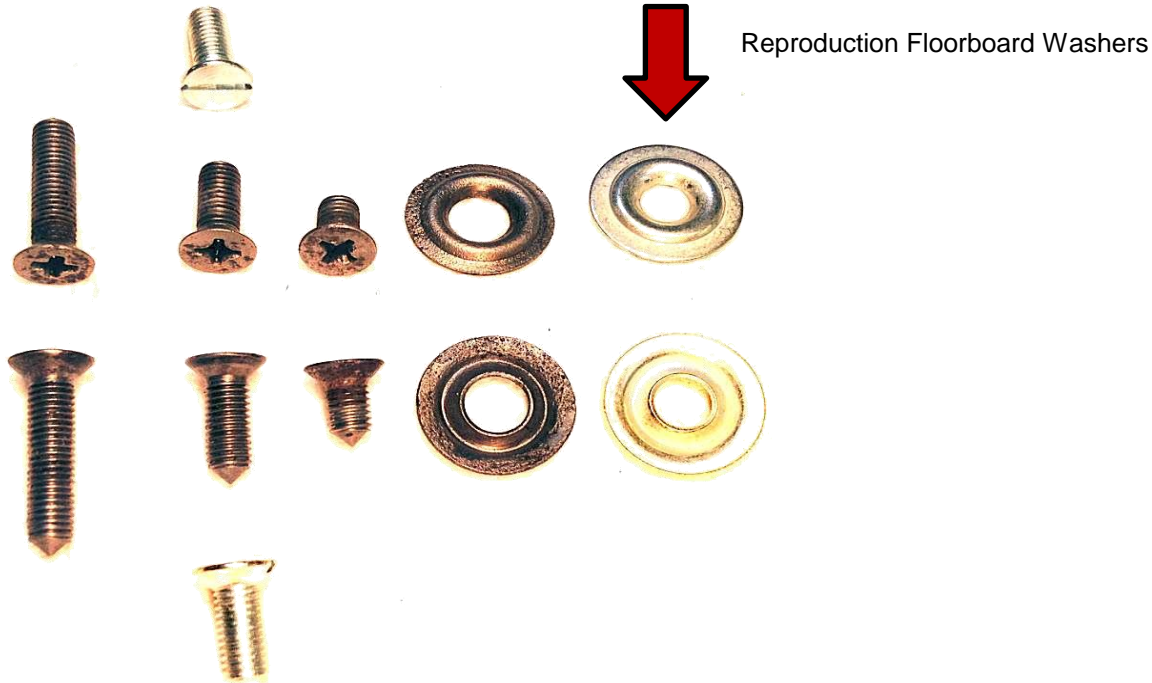
MG TF (TD) - Floorboard Fasteners

(rev 3/9/2015)

TOTAL	I.D.	WASHER	FTFU	MOSS	AB SPAR	BRIT T&F
2	3/8	Square LW	WAL160		23 540 (?)	6090
2	1/4	Flat				
6	5/16	Flat				
31	1/4	7/8" O.D. FB Wash	WAC0414		41 073	
"Kit"			FSBT317		41 073a	

Call supplier to learn contents of Floorboard Fastener "Kit"

Floorboard washers ("FB Wash") have 1/4" hole and are 7/8" O.D.
Reproductions are close to the originals.



FloorboardInstallationSequence.txt

Rod -

Forum members: Please don't shoot me ... this post may set a new record for length. Hope that it explains your floorboard supports and the floorboard installation process.

I have a diagram of fastener locations for TF (TD) floorboards on my Google Drive. Click the link below. Then click on the "download" icon near the top center of the screen to download to your computer. (A downward pointing arrow with a bar across the tip.)

<https://drive.google.com/file/d/0BxisXBEpc-IWa25XaHc4akNPd28/view?usp=sharing>

The file includes the size of each fastener and washer. Aftermarket sources are listed. There are a couple of errors which I will address at the end of this post.

To answer your question about the floorboard supports: All of the machine screws that attach the floorboard supports go into threaded holes or nuts welded to the gearbox bracket or to the rear support tabs. None are held by separate nuts and bolts.

Here is the order in which the supports, tunnel, floorboards, and hump are installed. The fastener size and washer for each location is on the list of "Floorboard Fasteners."

A) Attach the gearbox rear mount support bracket to the cross member.

M2L

M2R

B) Attach the floorboard supports to the gearbox support bracket and to the mounting tabs on the crossmember at the rear of the cockpit. NOTE: 7L & 7R are 3/8" long and go through a chamfered hole in the floorboard supports and secured into the middle hole of the support bracket on the rear cross member.

The rear most hole and welded nut in each floorboard support is not needed. Leave it empty.

M1L

M1R

7L

7R

8L

8R

C) Set the propshaft tunnel onto the floorboard supports. Optionally pad with felt, rubber, roofing felt, etc.

D) Place the floorboards into the cockpit and on top of the propshaft tunnel. Optionally pad and level the floorboards with felt, rubber, roofing felt where needed.

E-a) Install floorboard fasteners through floorboards into D-nuts in the toeboard. Some will not be accessible after the gearbox hump is installed.

2L

2R

FloorboardInstallationSequence.txt

3L
3R

E-b) Attach floorboard fasteners through floorboards, through propshaft tunnel, and into floorboard supports. Attach propshaft tunnel to heelboard.

6L
6R
9L
9R
10L
10R
4L
4R
5L
5R
H1
H2
H3

F) Set the gearbox hump in place on top of the floorboards and on top of the front edge of the propshaft tunnel.

G) Attach floorboard fasteners through gearbox hump, through floorboards. The fasteners will secure into either the floorboard supports, T-nuts in underside of the floorboards, or D-nuts in the toeboard. Also attach four floorboard fasteners through the gearbox hump into the toeboard at the crown of the hump.

1L
1R
13L
13R
12L
12R
11L (Through gearbox hump, floorboard, propshaft tunnel)
11R (Through gearbox hump, floorboard, propshaft tunnel)
T1
T2
T3
T4

H) Screw the outer edge of each floorboard to the wood outer frame with four wood screws.

I) Install carpet.
http://www.mg-cars.org.uk/mgtd/mgtd_carpet.htm

J) Attach the handbrake to the propshaft tunnel through the carpet.

E1
E2

FloorboardInstallationSequence.txt

K) Set the seats in place (MGTF) and attach with a fastener through each front hinge and through under-seat carpet into the T-nut under the floorboard.

S1L

S2L

S1L

S2R

Optionally screw the rear of the seat runner to the floor with a wood screw.

=====

Error in the diagram and parts list:

8L

8R

Do not use floorboard washer under 8L and 8R. The floorboard are routed 1/4" deep to clear the hex heads. Flat washers or split washers may cause the hex head to sit too high. Investigate.

>> Please double-check my info. I wrote it off the top of my head.

I will update the diagram and list to better portray the order in which the pieces are installed. (someday)

Lonnie
TF7211